

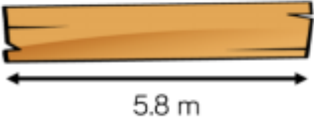
Green challenge- Converting cm to mm and then m to cm

Average Lengths of Insect			
Insect	Centimetres	Millimetres	Centimetres and Millimetres
giant burrowing cockroach	8.3cm	83mm	8cm 3mm
elephant beetle	<i>11.5cm</i>	115mm	<i>11cm 5mm</i>
honeybee	<i>1.5cm</i>	15mm	<i>1cm 5mm</i>
giant water bug	<i>11.6cm</i>	116mm	<i>11cm 6mm</i>
Hercules beetle	<i>5.1cm</i>	51mm	<i>5cm 1mm</i>
tarantula hawk wasp	<i>5.4cm</i>	54mm	<i>5cm 4mm</i>

Average Length of Reptiles			
Reptile	Metres	Centimetres	Metres and Centimetres
saltwater crocodile	4.55m	455cm	4m 55cm
American alligator	3.4m	<i>340cm</i>	<i>3m 40cm</i>
green sea turtle	1.12m	<i>112cm</i>	<i>1m 12cm</i>
giant tortoise	1.48m	<i>148cm</i>	<i>1m 48cm</i>
Komodo dragon	2.59m	<i>259cm</i>	<i>2m 59cm</i>
reticulated python	3.95m	<i>395cm</i>	<i>3m 95cm</i>

Challenge-

A plank of wood is 5.8 metres long.



Two lengths are cut from the wood.

175 cm

$3\frac{4}{5}$ m

How much of the wood is left?

There is 25 cm left.

Orange challenge- Converting between mm, cm and m

Average Length of Insects			
Insect	Centimetres	Millimetres	Centimetres and Millimetres
giant burrowing cockroach	8.3cm	83mm	8cm 3mm
elephant beetle	11.5cm	115mm	11cm 5mm
honeybee	1.5cm	15mm	1cm 5mm
giant water bug	11.6cm	116mm	11cm 6mm
Hercules beetle	5.1cm	51mm	5cm 1mm
tarantula hawk wasp	6.8cm	68mm	6cm 8mm
mountain beaver flea	1.2cm	12mm	1cm 2mm
giant earwig	8.4cm	84mm	8cm 4mm

Average Length of Reptiles			
Reptile	Metres	Centimetres	Metres and Centimetres
saltwater crocodile	4.55m	455cm	4m 55cm
American alligator	3.4m	340cm	3m 40cm
green sea turtle	1.12m	112cm	1m 12cm
giant tortoise	1.48m	148cm	1m 48cm
Komodo dragon	2.59m	259cm	2m 59cm
reticulated python	3.95m	395cm	3m 95cm
loggerhead sea turtle	0.95m	95cm	0m 95cm
Galápagos tortoise	1.85m	185cm	1m 85cm

Challenge

Dora says,



One metre is 100 times bigger than one centimetre. One centimetre is 10 times bigger than one millimetre. So, one metre is 110 times bigger than one millimetre

Is Dora correct?
Explain your answer.

Dora is incorrect. She has added the number of times bigger together rather than multiplying.

One metre is 1,000 times bigger than one millimetre.

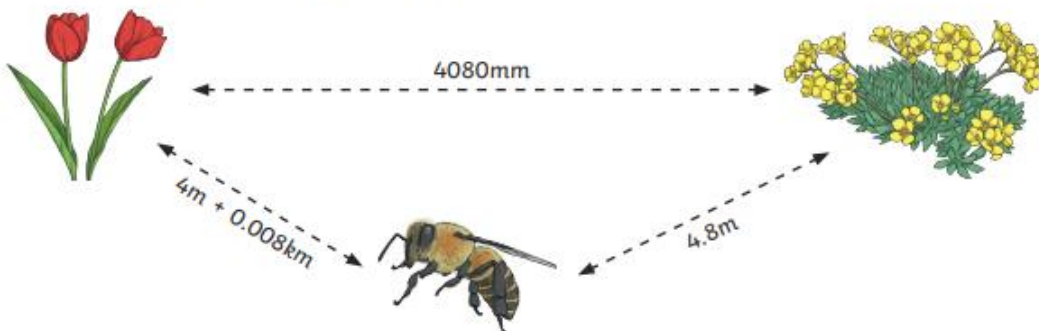
Red challenge- converting between mm/cm or m/km

giant burrowing cockroach	83mm	7cm + 1.3cm
elephant beetle	11.5cm	100mm + 15mm
honeybee	15mm	1cm + 0.5cm
giant water bug	11.6cm	90mm + 26mm
Hercules beetle	51mm	3cm + 2.1cm
tarantula hawk wasp	6.8cm	30mm + 38mm
mountain beaver flea	12mm	1cm + 0.2cm
giant earwig	8.4cm	50mm + 34mm

White Shark Bay to Monster Mountain	2.212km	2km + 0.212km
Monster Mountain to Murky Marsh	4370m	3km + 1.370km
Murky Marsh to Spiky Spider Tree	1.9km	1000m + 900m
Spiky Spider Tree to Terrible Turtle	3005m	2km + 1.005km
Terrible Turtle to Coconut Trees	6.95km	4000m + 2950m
Coconut Trees to Treasure Chest	1039m	1km + 0.039km

Challenge

A honeybee flies from flower to flower in a garden.



- a) The distance from the honeybee to the yellow flower is 72mm further than the distance from the yellow flower to the red flower.
Is this statement true or false? Explain your answer.

The statement is false. 4.8m is equal to 4800mm and the difference between 4800mm and 4080mm is 720mm