

Green challenge- Converting cm to mm and then m to cm

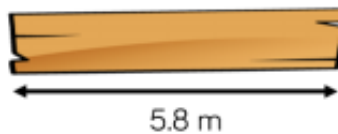
1) This table shows the average lengths of different species of insect. Complete the table.

Average Lengths of Insects			
Insect	Centimetres	Millimetres	Centimetres and Millimetres
giant burrowing cockroach	8.3cm	83mm	8cm 3mm
elephant beetle		115mm	
honeybee		15mm	
giant water bug		116mm	
Hercules beetle		51mm	
tarantula hawk wasp		54mm	

Average Lengths of Reptiles			
Reptile	Metres	Centimetres	Metres and Centimetres
saltwater crocodile	4.55m	455cm	4m 55cm
American alligator	3.4m		
green sea turtle	1.12m		
giant tortoise	1.48m		
Komodo dragon	2.59m		
reticulated python	3.95m		

Challenge-

A plank of wood is 5.8 metres long.



Two lengths are cut from the wood.

175 cm

$3\frac{4}{5}$ m

How much of the wood is left?

Orange challenge- Converting between mm, cm and m

Average Lengths of Insects			
Insect	Centimetres	Millimetres	Centimetres and Millimetres
giant burrowing cockroach	8.3cm	83mm	8cm 3mm
elephant beetle		115mm	
honeybee	1.5cm		
giant water bug			11cm 6mm
Hercules beetle		51mm	
tarantula hawk wasp	6.8cm		
mountain beaver flea			1cm 2mm
giant earwig		84mm	

Average Lengths of Reptiles			
Reptile	Metres	Centimetres	Metres and Centimetres
saltwater crocodile	4.55m	455cm	4m 55cm
American alligator			3m 40cm
green sea turtle	1.12m		
giant tortoise		148cm	
Komodo dragon	2.59m		
reticulated python		395cm	
loggerhead sea turtle		95cm	
Galápagos tortoise			1m 85cm

Challenge

Dora says,



One metre is 100 times bigger than one centimetre.
 One centimetre is 10 times bigger than one millimetre.
 So, one metre is 110 times bigger than one millimetre

Is Dora correct?

Explain your answer.

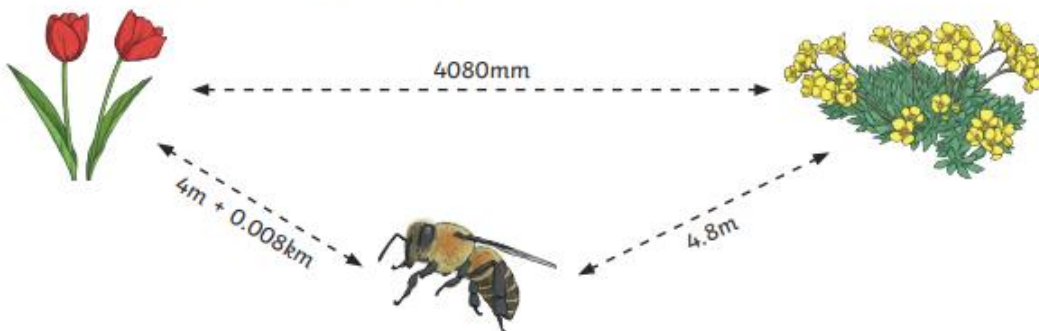
Red challenge- converting between mm/cm or m/km

giant burrowing cockroach	83mm	7cm + ____cm
elephant beetle	11.5cm	100mm + ____mm
honeybee	15mm	1cm + ____cm
giant water bug	11.6cm	90mm + ____mm
Hercules beetle	51mm	3cm + ____cm
tarantula hawk wasp	6.8cm	30mm + ____mm
mountain beaver flea	12mm	1cm + ____cm
giant earwig	8.4cm	50mm + ____mm

White Shark Bay to Monster Mountain	2.212km	2km + ____km
Monster Mountain to Murky Marsh	4370m	3km + ____km
Murky Marsh to Spiky Spider Tree	1.9km	1000m + ____m
Spiky Spider Tree to Terrible Turtle	3005m	2km + ____km
Terrible Turtle to Coconut Trees	6.95km	4000m + ____m
Coconut Trees to Treasure Chest	1039m	1km + ____m

Challenge

A honeybee flies from flower to flower in a garden.



- a) The distance from the honeybee to the yellow flower is 72mm further than the distance from the yellow flower to the red flower.
Is this statement true or false? Explain your answer.